



Anchorum Fellows and DAF Program



Jenny Parks, Vice President of Strategic Philanthropy, Anchorum

Pamela Pereyra, Fellows Program Manager, Anchorum

Elmo Baca, Executive Director, Las Vegas NM Community Foundation

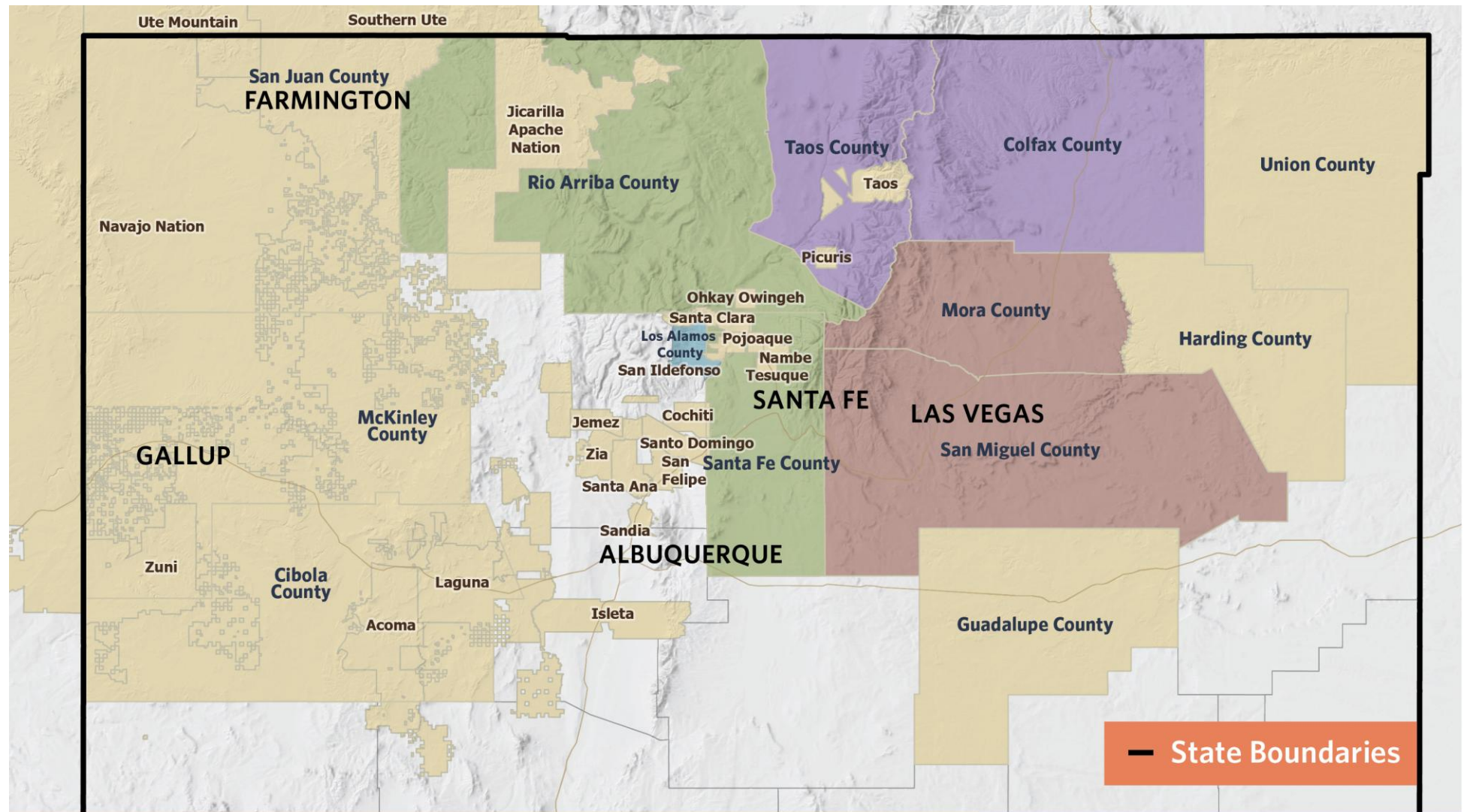
Ariel Cordero, Fellow, Las Vegas NM Community Foundation

Karen John, Fellow, New Mexico Foundation





Anchorum
Health Foundation



Las Vegas Community Foundation

- San Miguel County
- Mora County

Los Alamos Community Foundation

- Los Alamos County

New Mexico Foundation

- Pueblos and Tribal Nations
- San Juan County
- Union County
- Harding County
- McKinley County
- Cibola County
- Guadalupe County

Taos Community Foundation

- Taos County
- Colfax County

Santa Fe Community Foundation

- Rio Arriba County
- Santa Fe County



Anchored Health Foundation

INVESTING **\$5** MILLION PER YEAR
IN **5** COMMUNITY FOUNDATIONS
OVER **5** YEARS
TOTALING **\$25** MILLION

anchored.org

Anchored Community Health Funds

Healthy Communities. Healthy People.

Anchored Health Foundation is investing \$25 million over five years in five community foundations across northern New Mexico. The Community Health Funds recognize the vital role these foundations play in addressing health disparities and improving overall wellness.

This funding empowers each foundation to tackle local priorities, such as food security, housing, and more. Our support is designed to be flexible, responsive to community voice, and impactful.

Anchored is dedicated to improving the conditions that have the most influence on the health of communities and people in our region.



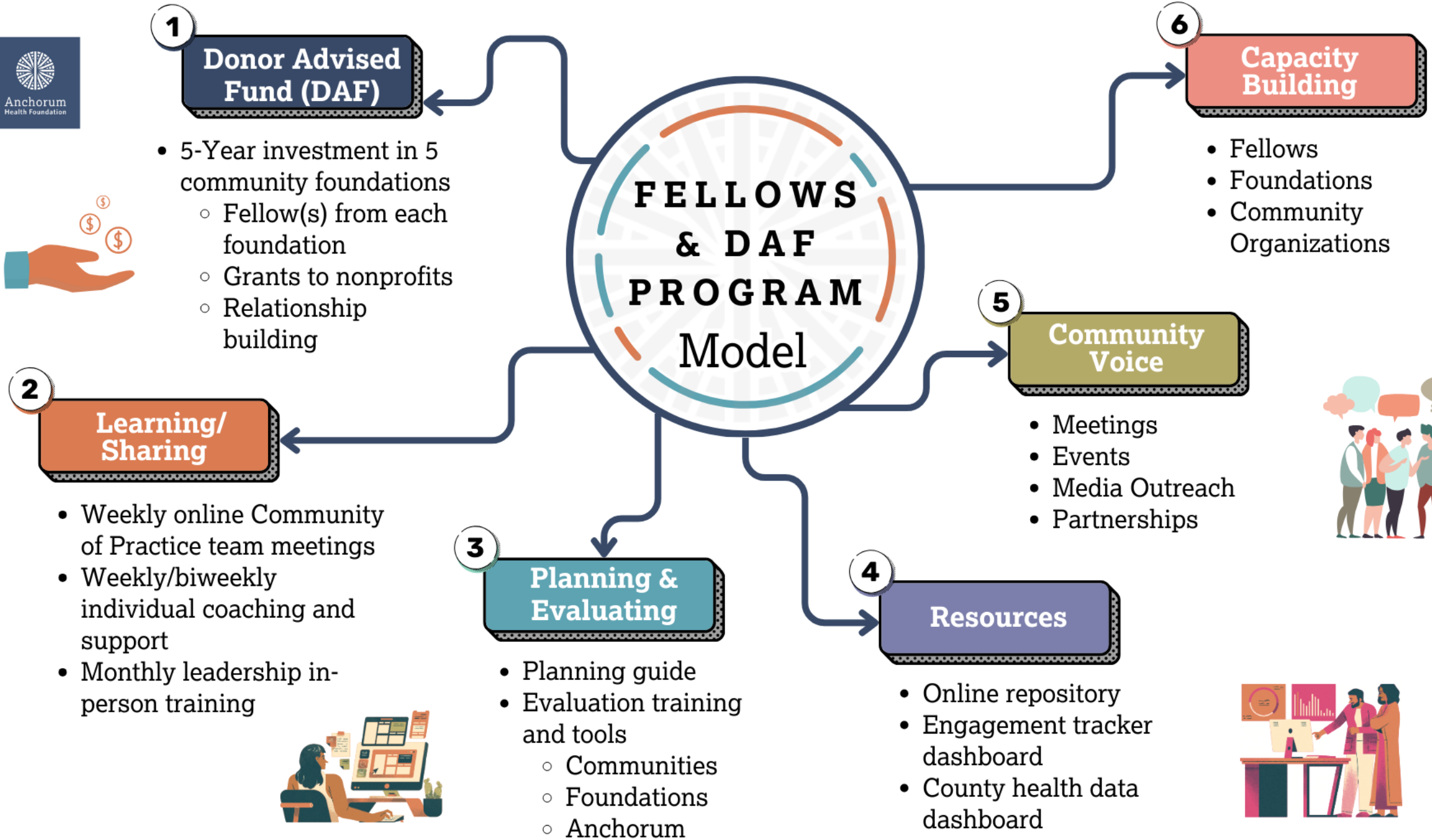
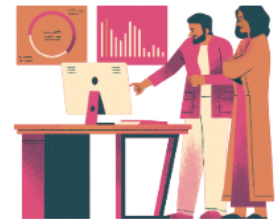
Anchored Fellows

As part of our investment, we are funding an Anchored Fellow at each community foundation.

These Fellows engage communities to identify pressing needs and develop innovative, lasting solutions.

Through professional training, leadership development, and a network of peers, Fellows are empowered to build strong community connections and evaluate the impact of their work.

Anchored Fellows are supported and empowered to create change in their communities.





Community Engagement Tracker

Anchorum Community Engagement Tracker

Focal Area: All
Tactic: All
Outreach Lead: All
Staff Lead: All
Story Keyword: All
Date: Select Date Range

Event Summary

Total Events

26

Total Connections

361

(Estimated)

Event Details

All of the above

Event Type: Attend Community Event
Event Date: 2/13/2025, 12:00 PM

All of the above

Event Type: Small meeting (fewer than 5 people)
Event Date: 2/13/2025, 12:00 PM

Texas Parks & Wildlife, Esri, TomTom, Garmin, FAO, NOAA, USGS, EPA, USFWS
Powered by Esri

Focal Area

-Please select-

Individual Health (behavioral, physical, food security)

Health Care Access

Neighborhood and Built Environment (healthy neighborhoods; housing and homelessness)

Education and Career Pathways

Community Foundation-led

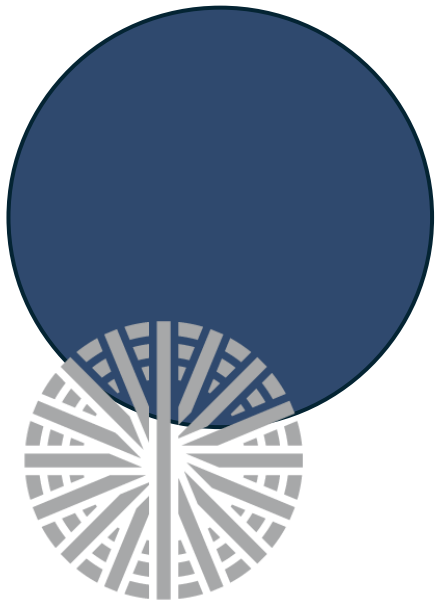
When did you do this?

Focal Area

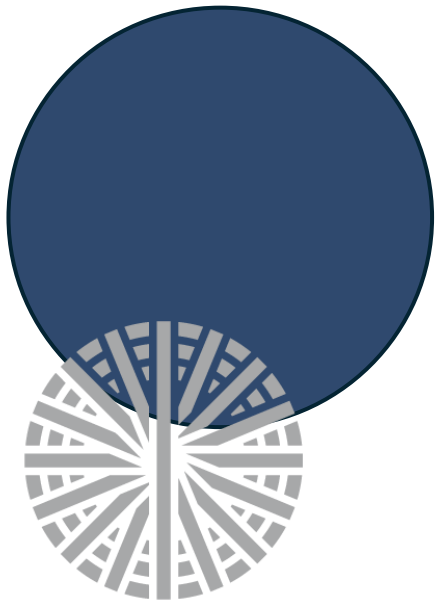
Engagement Tactic

Primary Engagement Purpose

*click on a bar to filter results



County Health Data Dashboard





Las Vegas, NM



Las Vegas, NM





Las Vegas, NM Wildfire





Las Vegas, NM Wildfire



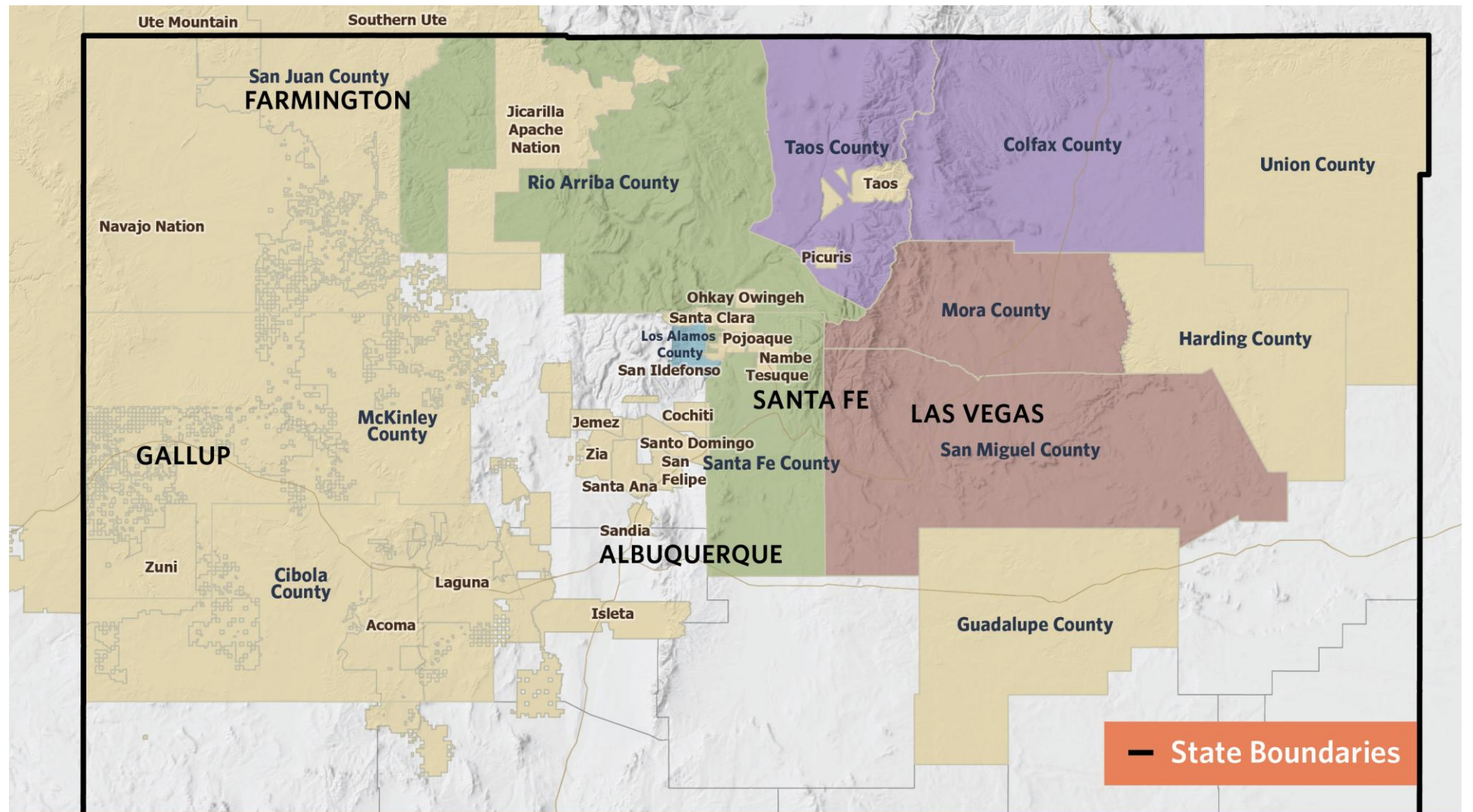


The Pecos Valley





Anchorum
Health Foundation



Las Vegas Community Foundation

- San Miguel County
- Mora County

Los Alamos Community Foundation

- Los Alamos County

New Mexico Foundation

- Pueblos and Tribal Nations
- San Juan County
- Union County
- Harding County
- McKinley County
- Cibola County
- Guadalupe County

Taos Community Foundation

- Taos County
- Colfax County

Santa Fe Community Foundation

- Rio Arriba County
- Santa Fe County



Shiprock, NM



NM Pueblos, Tribal Nations



[Navajo Nation Council by SounderBruce](#)



[Taos Pueblo by John Mackenzie Burke](#)



[Isleta Pueblo by MARELBU](#)



Northwest New Mexico





Northeast New Mexico



West of Mosquero, Harding County by PatrickAlexander



Capulin Volcano National Monument, Union County by NPS staff



Santa Rosa Downtown New Mexico, Guadalupe County by [Eric T Gunther](#)

Thank you!

