

nten

# Artificial Intelligence for Philanthropy

nten

**We are creating a world where missions and movements are successful through the skillful and equitable use of technology.**


We build transformative power by connecting people who are putting technology to work for social change.

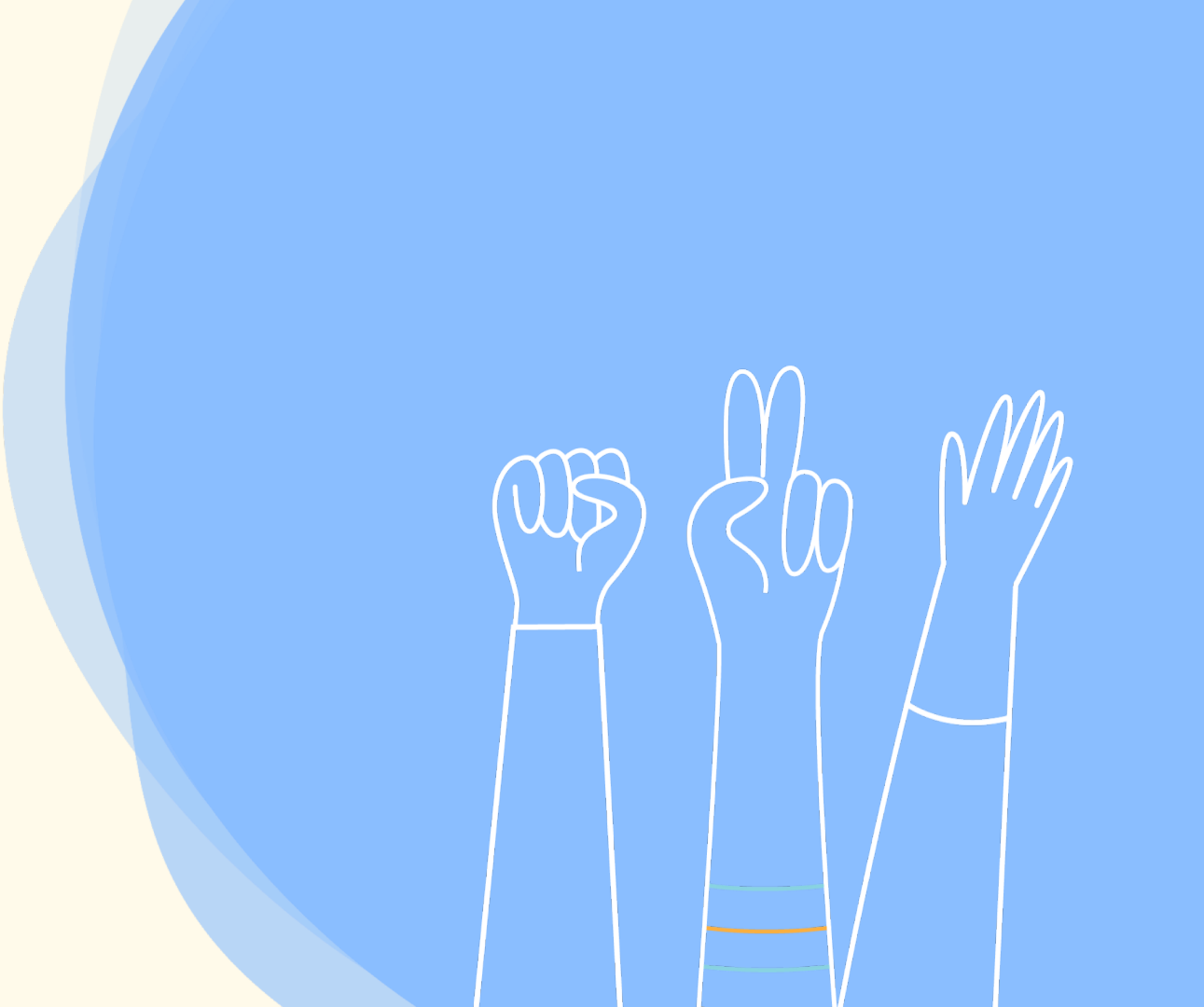
We relentlessly advocate for the redesign of the systems and structures that maintain inequity.



**Amy  
Sample Ward**  
they/them

We can change the world  
when we **change our  
approach to technology.**





nten



*TECH*  
**ACCELERATE**

POWERED BY **NTEN**

nten



Every  
organization  
has the  
potential to be  
highly-effective  
with tech.

# Successful practices

NTEN's 20 years of research shows the following practices are highly correlated to effective organizations:

- Technology decision-makers are included in strategic planning
- A technology decision-maker is part of the leadership team
- Technology is budgeted for clearly and intentionally
- Return on investment is measured for tech projects
- Training for technology is provided to all staff continually

What does this mean for  
**artificial intelligence?**





## Acceptable AI use policies

Do you have a policy defining appropriate use of artificial intelligence tools or applications?

### Average answer



## Review AI for bias

Do you have a policy and practice for reviewing artificial intelligence tools or applications for bias?

### Average answer



# Tech Accelerate trends

Looking across budget sizes and mission areas, clear trends show up that demonstrate areas of clear need for nonprofits, including:

- Security continues to need investment for all organizations
- Intent isn't matching implementation
- Accessibility is a barrier for community and mission

nten

# Artificial intelligence



# Common terms

- **Algorithm:** rules the machine follows.
- **Dataset:** collection of related data.
- **Training data:** all of the data that was used in the machine learning algorithm.
- **Model:** the product created by running the machine learning algorithm on training data.



# Common terms

- **Artificial intelligence:** general umbrella term for machines operating in a way that simulates human intelligence.
- **Machine learning:** the development and use of algorithms to enable machines to operate with simulated intelligence.



# Common terms

- **Generative AI:** category of AI tools that respond to prompts or inputs by generating new content.
- **Natural Language Processing:** a general term for a machine that can operate with human conversational interaction.



# Common terms

- **Large Language Model:** a type of algorithm that has trained on massive amounts of data to then evaluate, create, and even anticipate human language and content.
- **Hallucination:** instances in which an AI model produces content that is not factual or correct but is presented as if it is.



nten

# Risks + rewards:

AI products are rife with harm, often invisible to the user.

What is our duty of care in using AI?

# Risks + rewards:

Online, if it is free then you are the product.  
Where are the appropriate boundaries  
between for-profit vendors and your mission?

nten

# Risks + rewards:

Real social, environmental, and psychological harm is already beyond calculation.

What harm are you prepared to be associated with or accountable for?

nten

# Risks + rewards:

Question the hype and urgency.  
Who benefits when you hurry?

nten

# AI Framework for an Equitable World

Created by the nonprofit & philanthropy community as  
a tool for dynamic evaluation of AI use.



# Assessment

Input

Outcomes

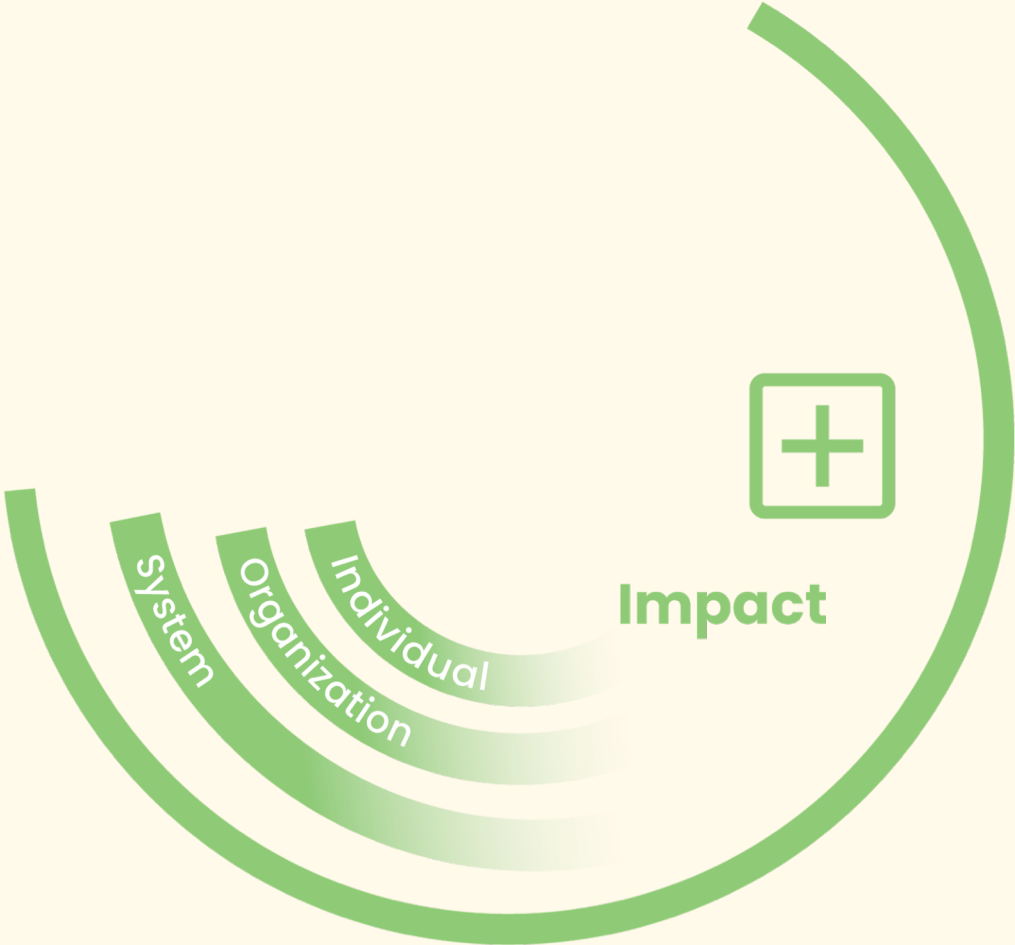
Accountability



# Assessment



- What limitations on data or content inputs do we need to have in place?
- What practices or policies do we need to implement to keep a human involved in the full review of all outputs?
- What is our process for adequate disclosure to the community of our project's data or content use, and ways they can opt-out as appropriate?



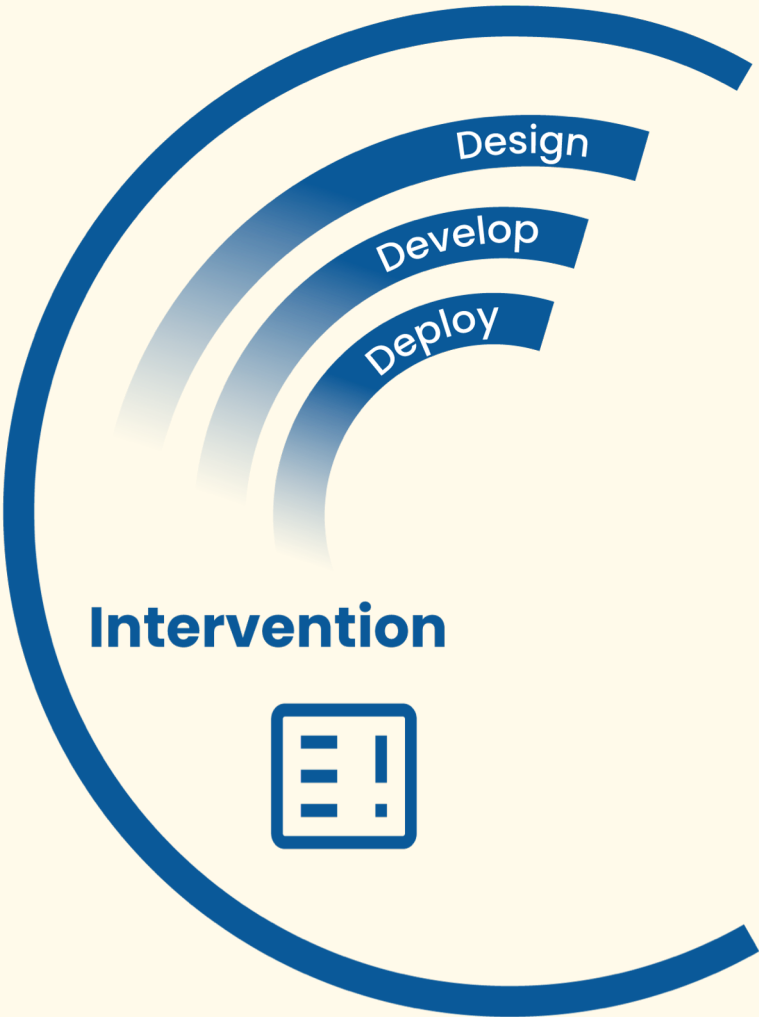


nten

# Impact



- How will you ensure that a diversity of perspectives, lived experiences, accessibility needs, and technical skills are engaged meaningfully in the project?
- What training is needed to support staff contributing to the project and adopting the tool?
- Who else is working on a similar project in our mission-area, sector, or across the system that we could collaborate with?

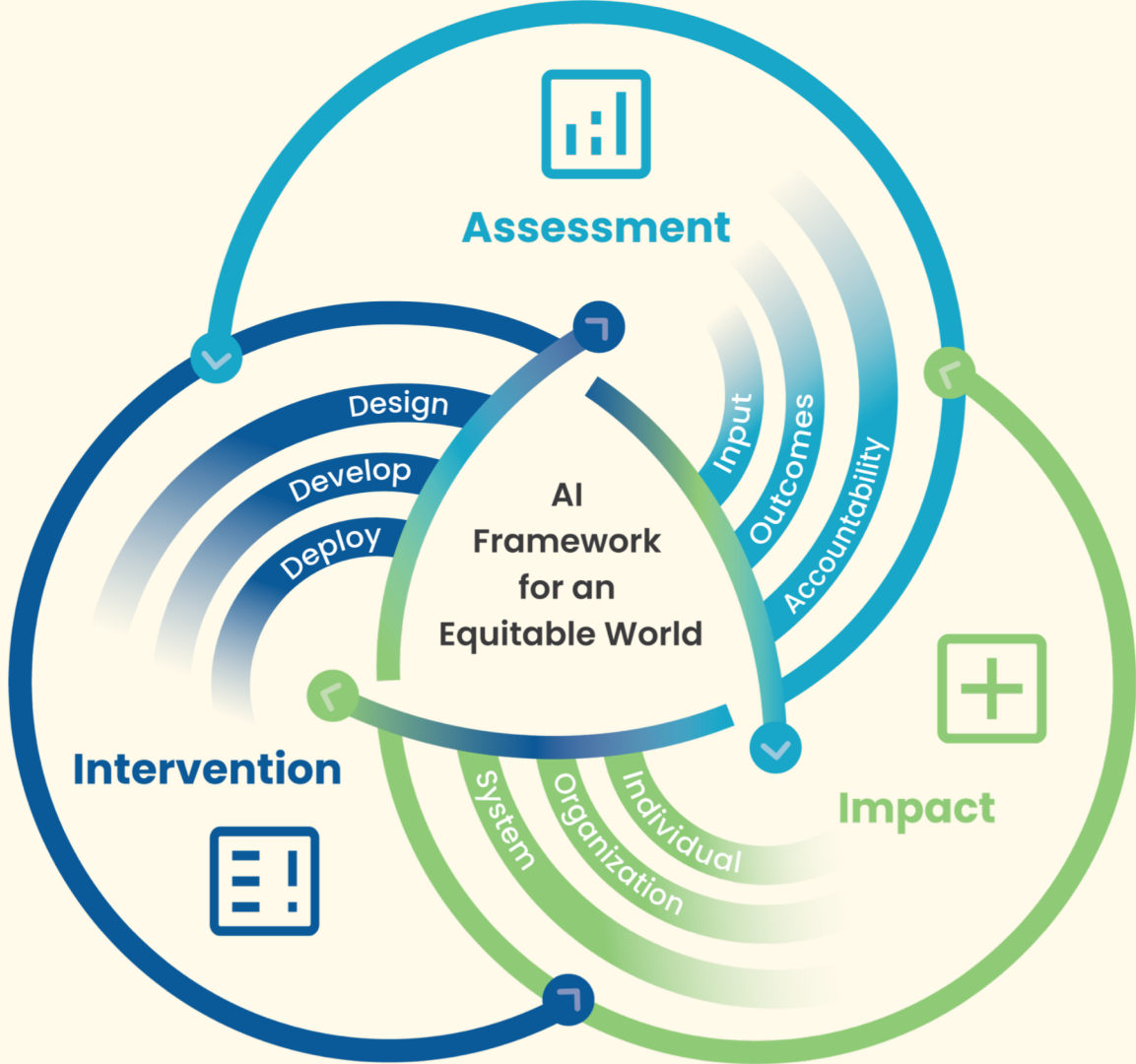


nten

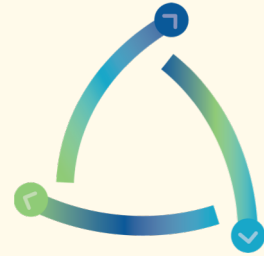
# Intervention



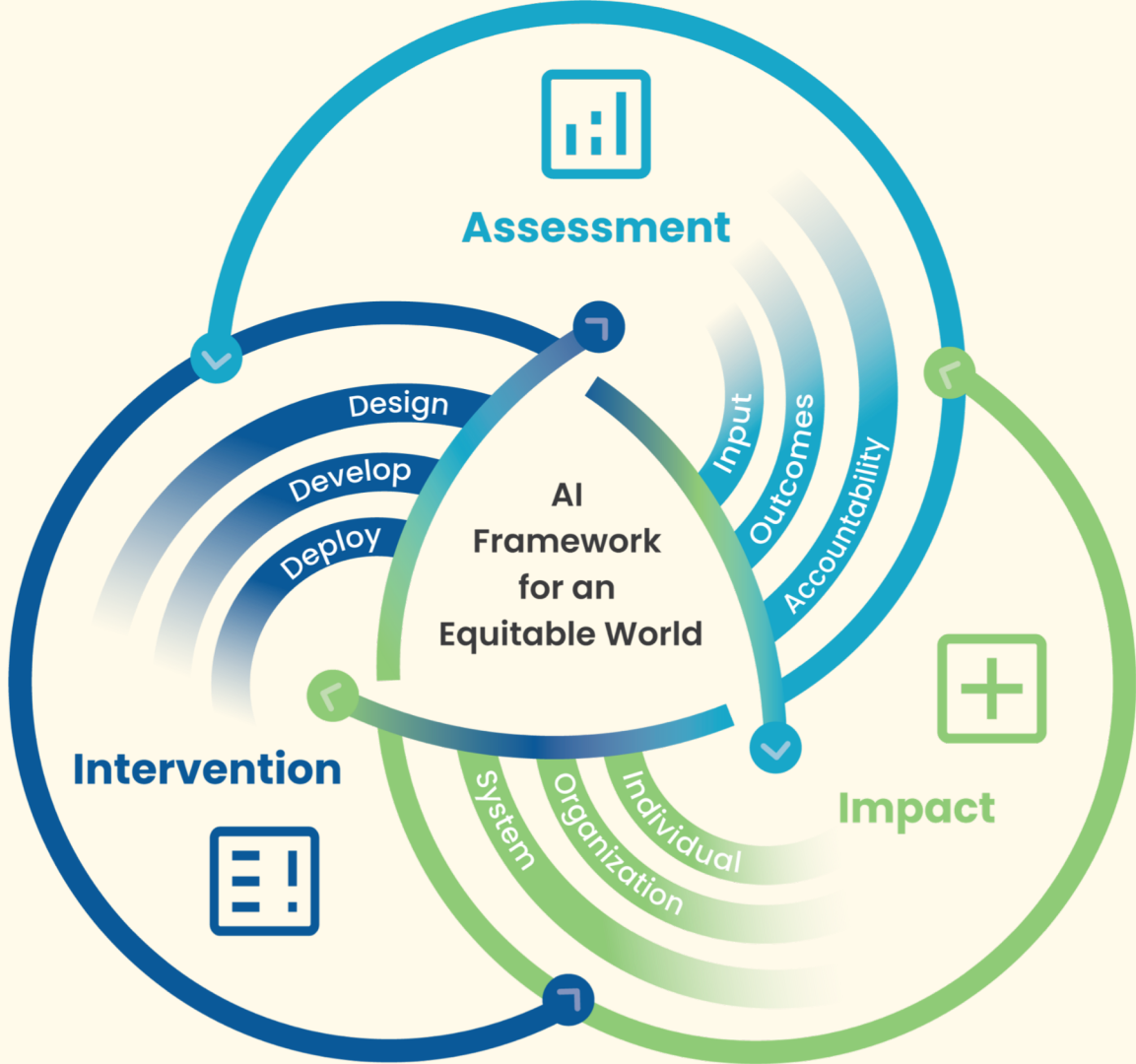
- How will we design a project process that is inclusive and accessible to our team and our community?
- What practices or policies will we need to develop that our organization hasn't used before?
- How will we resource our project both with financial and staffing investments for the long-term, recognizing that our project will require continued testing and refinement?



# Intersections



- Where can we design or expand policies to evaluate if inputs and outcomes align with our goals?
- How can we report what we are learning to influence the whole sector or system we are part of?
- Where can we collaborate with other organizations or people to test ways to improve our outcomes by combining our inputs for more inclusive data?



nten

# Begin where you are

- You have policies you can build from.
- You have staff skills and needs that inform priorities.
- Your grantees, partners, colleagues, and peers have valuable perspectives.



nten

Explore the new

# **AI for Nonprofits Resource Hub**

[nten.link/ai](https://nten.link/ai)



Effective technology is  
**equitable technology.**



nten

**Thank you!**

You are never alone in this  
work.

[amy@nten.org](mailto:amy@nten.org)



**Amy  
Sample Ward**  
they/them